

Rural Pact Conference

15-16 June 2022



A STRATEGY FOR “INNER AREAS” IN ITALY

Fostering growth through Inner Areas development

Sabrina Lucatelli – Cohesion Policy Department –
Presidency of Italy’s Council of Ministers



The 2014-2020 ITALIAN INNER AREAS PILOT ACTION

Italy is:

- A dense and varied network of urban centers which offer a wide range of essential services like healthcare, education, and transport. These centers represent a 'point of convergence' for people living in remote areas;
- The distance from these urban networks affects people's quality of life preventing them to benefit of these essential services and fostering their sense of social inclusion
- Relations between urban and rural centers are context dependent and may vary substantially standing to the area considered

The levels of Government: State – Regions – Municipalities (*Provinces*)

The Italian rural-urban divide – A paradox

- Italy suffers from a serious rural-urban divide. With a paradox.
- Italian rural areas have a “diversity advantage”, due to both nature and history, and resulting in:
 - These areas being of great interest for a more diversified global demand
 - People in the areas being potentially more resilient to threats

This advantage is reflected by multiple signals: a scattered inflow of both young people (sometimes coming back) and foreigners, mostly in agro-pastoral activities, experiments in education and health services, cultural and artistic projects, new teleworking opportunities

- But in most rural areas, especially the more remote ones, all the sign of crisis are there: people's exit; ageing; population drop; fall of young people working on the land; failure to undertake the maintenance of land, river, forests and infrastructures; high risk of exposure to floods, earthquakes and droughts; moving out of private and public services and worsening of their quality

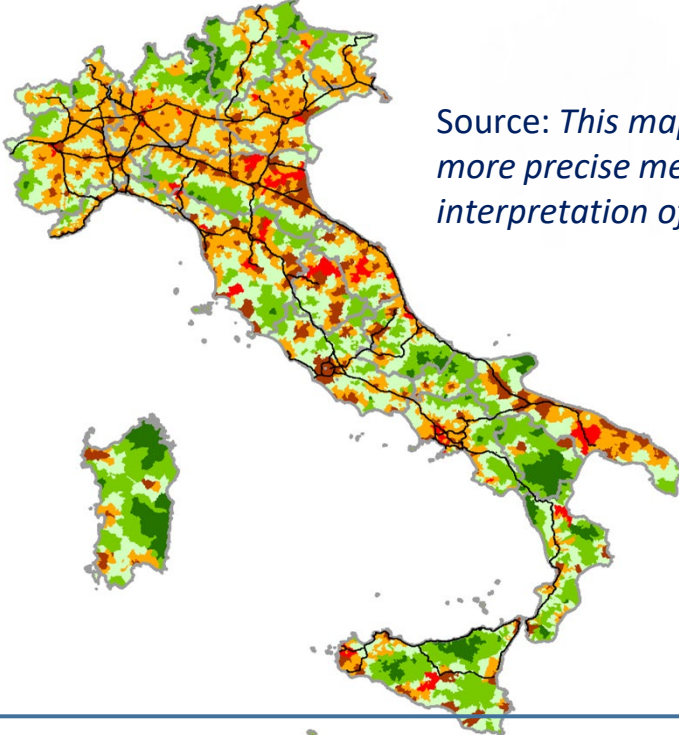
Inner Area: what does it mean?

Inner Areas are those territories characterized by:

- a NOT adequate offer of/access to essential services to assure citizen's rights;
- being rich in natural assets (water resources, agricultural systems, forests, natural landscapes) and cultural resources (archaeological settlements, abbeys, small museums, craft centres);
- low population density;
- often: high seismic risk.

In Italy inner areas cover almost 60% of the whole national territory embracing about 23% of its total population and more than 4,000 municipalities

Territorial Cohesion Objective

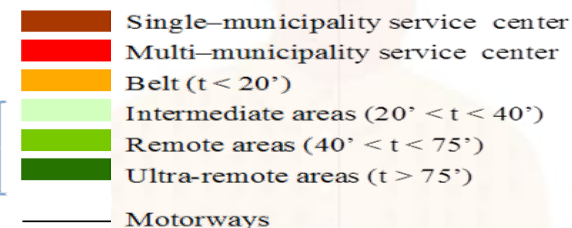


Source: This map is under updating phase, with a more precise measure of accessibility and better interpretation of intermediate areas

Classification of Municipalities	N.	%	Average Altitude	Population	%	KM ²	%
Single-Municipality Service Centre	217	2.7	148	20,993,647	35.3	28,987	9.6
Multi-Municipality Service Centre	123	1.5	195	3,008,676	5.1	8,736	2.9
Belt areas	3,571	44.1	219	22,150,877	37.3	84,235	27.9
Intermediate areas	2,371	29.3	399	8,773,390	14.8	88,461	29.3
Remote area	1,520	18.8	601	3,869,379	6.5	72,541	24.0
Ultra-remote areas	290	3.6	666	637,765	1.1	19,113	6.3
Total	8,092	100	358	59,433,734	100	302,073	100.0

Source: CTAI elaboration Istat - Census 2011

Inner Areas



Inner Areas are those territories characterized by:

- a NOT adequate offer of/access to essential services to assure citizen's rights;
- being rich in natural assets (water resources, agricultural systems, forests, natural landscapes) and cultural resources (archaeological settlements, abbeys, small museums, craft centres);
- low population density;
- often: high seismic risk.

In Italy inner areas cover almost 60% of the whole national territory embracing about 23% of its total population and more than 4,000 municipalities

60% of national territory
4.000 municipalities
23% of total population
65% mountain municipalities

Territorial Cohesion Objective



5 Important Innovations

- National dimension and multilevel (Centres – Regions –municipalities and inter municipalities cooperation)
- In the project areas - at the same time - services improvements (mainly through national policy) and investments in selected development factors (energy; agriculture; crafts; cultural heritage; regional policy)
- Multi-fund attitude (EAFRD, ERDF, ESF and National Funds)
- Participatory approach to local development
- Municipalities Associations and Mayors attention to “Policy Results” (accountability)

Ultimate Goal:
Reinforce Selected Areas Demographic Structure

A multilevel governance in depth

The central level

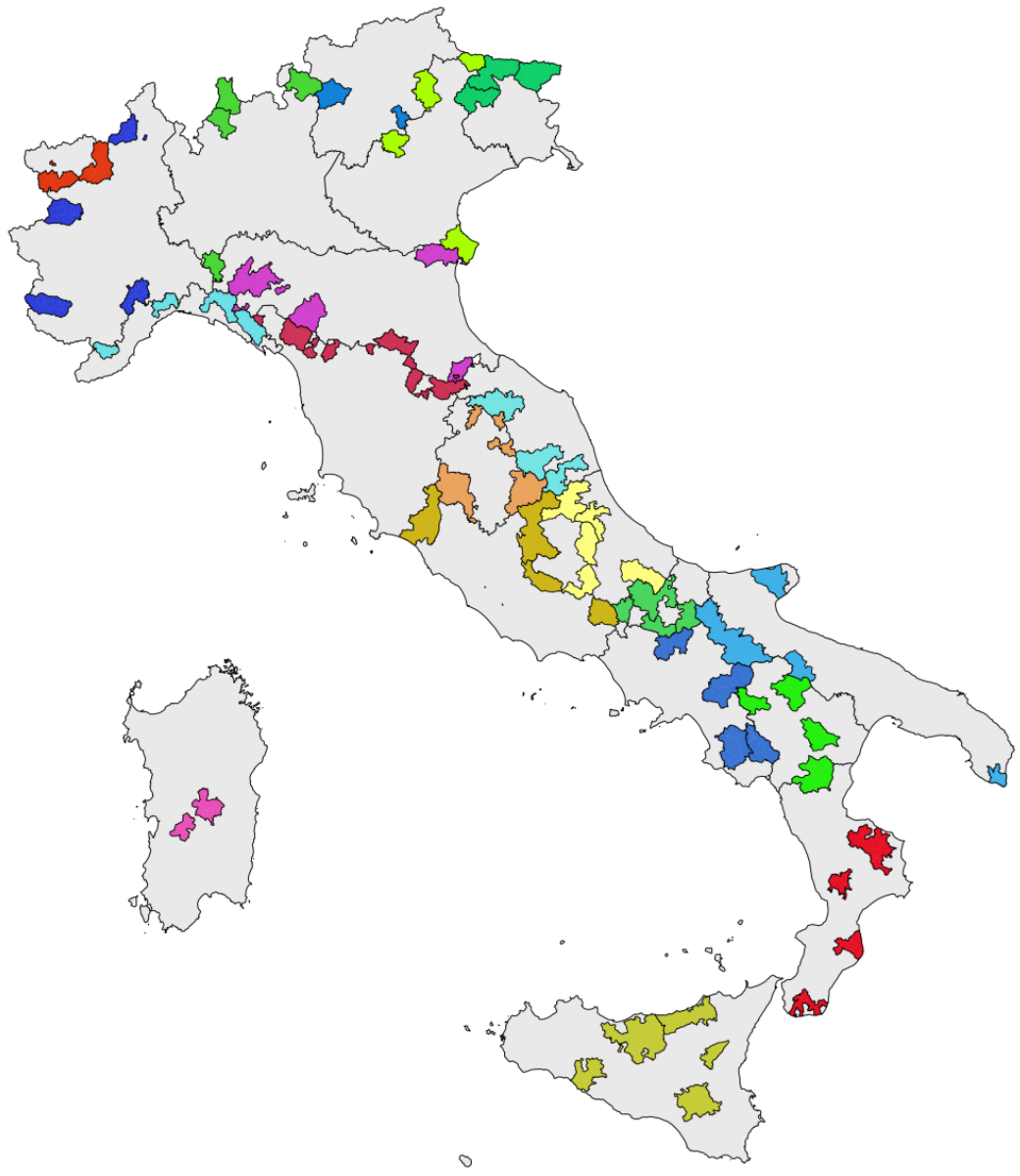
- Fosters and Monitors the Strategy's Application
- Encompass main elements of the Strategy into the Partnership Agreement 2014-2020
- Manages the Federation of Projects
- The Open Kit and measurements toolkits

The regions

- Financial Allocation for Inner Areas in the Programs (ITI and/or not ITI);
- Selection of Specific Areas (With the State)/ Projects; Political Support – **President of the Region;**

Municipalities (*associated*)

- Design and Implement of the Strategy at territorial level; Participate in the Framework Agreement selecting projects; manage services ...



At the current stage, selected areas within the Strategy are:

- ❖ **72** project areas with about 2mln. total residents and **1,077** municipalities;
- ❖ on average: **15** municipalities and **29,000** residents per project area;
- ❖ about **3%** of Italian population and **16.7%** of Italian territory;
- ❖ **55%** of those 2 mln. live in remote and ultra-remote areas;
- ❖ **4.4%** population drop among selected areas between 2001 and 2011, and **2.3%** between 2011 and 2016.

Inner Areas National Strategy Method

The Technical Committee along with Regions analyse Inner Areas through a desk-analysis and a field-analysis process



Quantitative data and qualitative information are used to identify and select weakest Inner Areas



Each selected area define its local development strategy



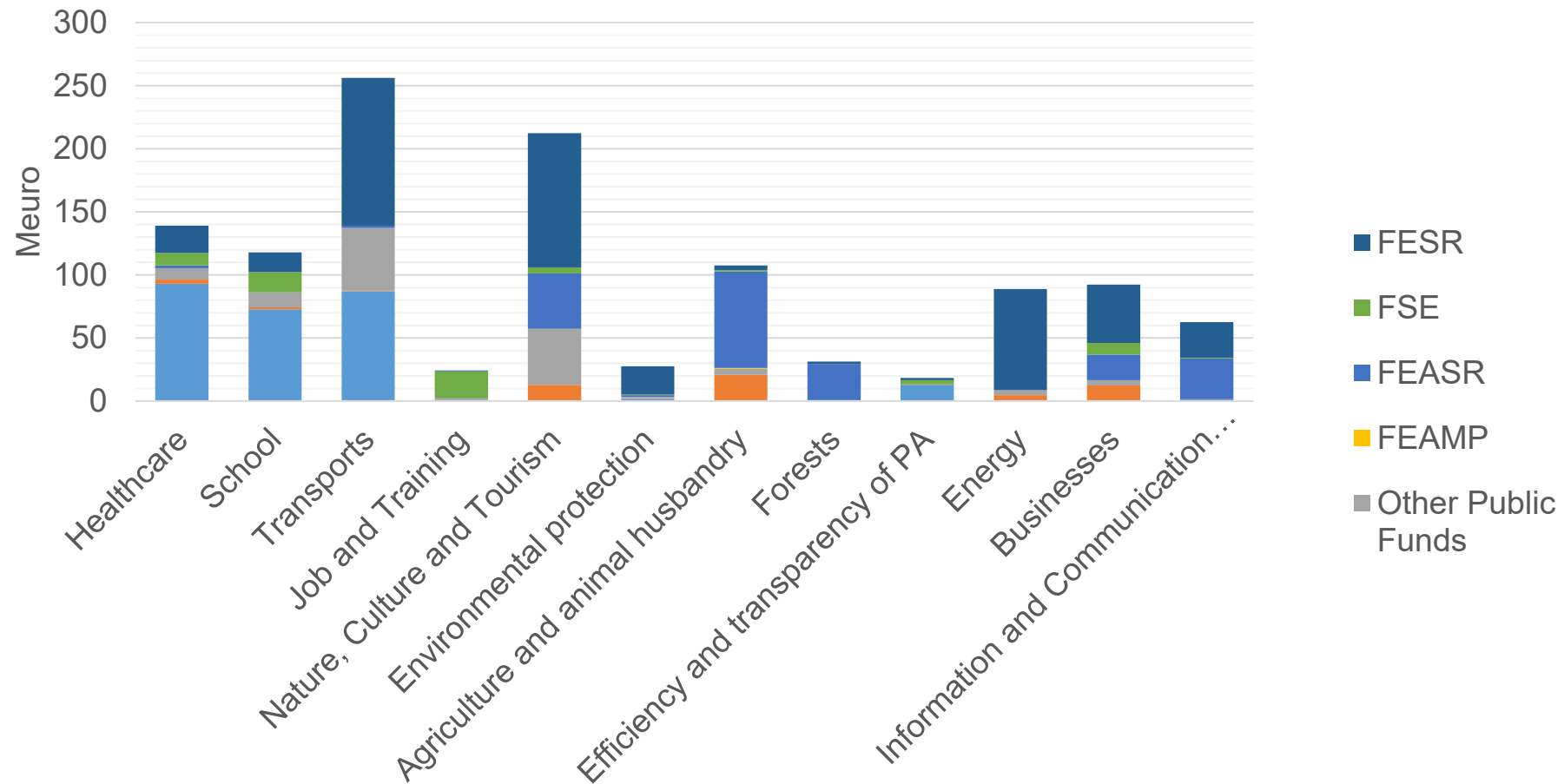
A local development strategy is an integrated path aimed at development and growth



It is based on local essential services improvements and local development projects support



Approved Strategies per sector and Sources (1.180 million euros)



Rural Pact Conference
15-16 June 2022

Sabrina Lucatelli – Cohesion Policy Department –
Presidency of Italy's Council of Ministers





SCRIVIA OPENCOESIONE | NEWS | OPEN DATA | ENGLISH

OPENCOESIONE

Verso un migliore uso delle risorse: scopri, segui, sollecita.

Cerca tra progetti, soggetti e territori

HOME | PROGETTI | PROGRAMMI | SOGGETTI | PROGRAMMAZIONE RISORSE E STRUMENTI | APPROFONDIMENTI RIUSO E PARTECIPAZIONE

Aree Interne

Ciclo di programmazione 2014-2020 | Tutte le regioni | VAI ALLA LISTA DEI PROGETTI

Lista dei territori

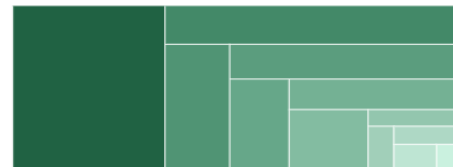
Dove si interviene?

Regione	Zona	Costo pubblico	Pagamenti	Numero di progetti
FRIULI VENEZIA GIULIA	Area Interna Alta Carnia	€ 1.511.861	€ 1.491.797	31
CAMPANIA	Area Interna Alta Irpinia	€ 4.498.592	€ 1.267.530	11
LOMBARDIA	Area Interna Alta Valtellina	€ 7.509.036	€ 1.076.613	13
LOMBARDIA	Area Interna Alto lago di Como e Valli del Lario	€ 2.648.949	€ 67.812	11
MARCHE	Area Interna Appennino Basso Pesarese e Anconetano	€ 445.532	€ 132.787	10
EMILIA-ROMAGNA	Area Interna Appennino Emiliano	€ 2.640.000	€ 371.855	9
LOMBARDIA	Area Interna Appennino Lombardo - Oltre Po pavese	€ 1.568.790	€ 0	9
VALLE D'AOSTA/VALLEE D'AOSTE	Area Interna Bassa Valle	€ 10.170.954	€ 2.708.307	31
EMILIA-ROMAGNA	Area Interna Basso Ferrarese	€ 57.000	€ 6.546	1
ABRUZZO	Area Interna Basso Sangro - Trigno	€ 3.525.904	€ 890.767	21

Tem

In quali settori si interviene?

- Trasporti 35%
- Energia 11%
- Istruzione 7%
- Occupazione 6%
- Rafforzamento PA 2%
- Ricerca e innovazione 1%
- Città e aree rurali 0%
- Cultura e turismo 16%
- Inclusione sociale 11%
- Competitività imprese 7%
- Agenda digitale 2%
- Ambiente 1%
- Infanzia e anziani 1%



Natura dell'investimento

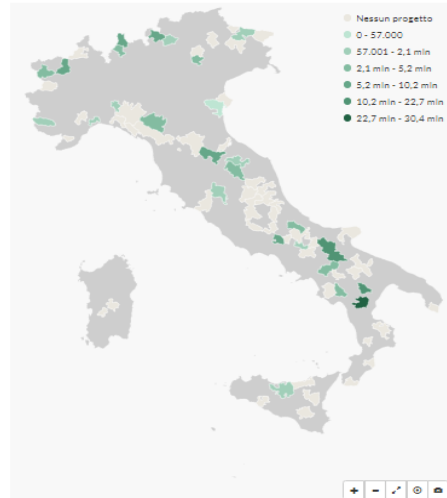
Cosa si fa con i progetti?

- Acquisto beni e servizi 46.930.922
- Infrastrutture 97.463.235
- Incentivi alle imprese 6.593.022
- Contributi a persone 874.869
- Conferimenti capitale 0
- Non disponibile 0



Territori

Dove si interviene?



OPENCOESIONE

Towards better use of development resources.
Find out, follow, press forward.

OpenCoesione is the open government initiative
on cohesion policy in Italy

The portal provides access to information about
projects:

- Description, Funding (amount and sources), Locations and Thematic areas, Implementation timing
- 100+ variables for each project in open data section (CSV)

Everyone can therefore assess how resources are
being used to meet the needs of the territories
involved

The section dedicated to the projects included in
the Strategy for Inner Areas is about to be
published

EAFRD SUPPORT TO LOCAL COALITION POST 2022

**CAPITALIZE ON LESSON
LEARNED IN THE 2014-20 PERIOD**

**COOPERATI
ON (under
article 77,
reg. EU
2021/2115)**

**CO-DESIGN APPROACH
INVOLVING RELEVANT ACTORS
AND DIFFERENT LEVEL OF
GOVERNEMENT (LOCAL;
REGIONAL; NATIONAL)**

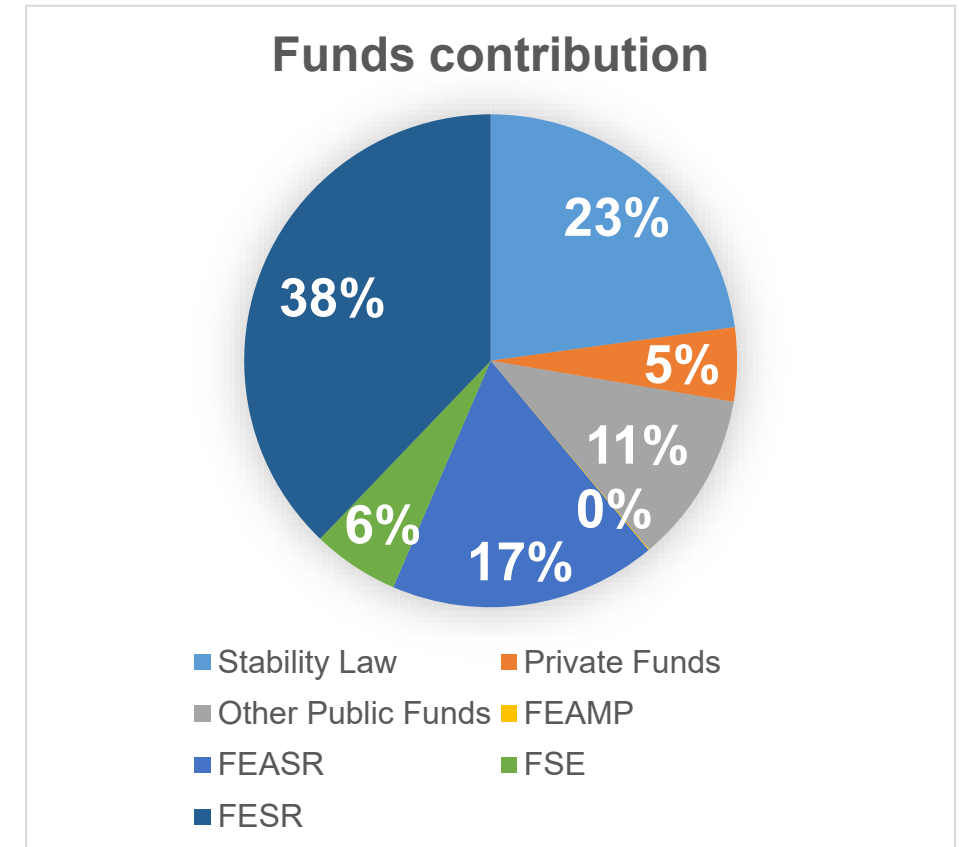
**costs of
cooperation +costs
of the operations
implemented**

**SOCIAL INNOVATION, AGRICULTURE AND LOCAL IDENTITIES, SYNERGY
WITH TOURISM**

Approved Strategies Funds Co-participation



- SUBSTANTIAL INTEGRATION BETWEEN FUNDS IN ORDER TO REACH COMMON EXPECTED RESULTS
- INTERVENTION CONSTRAINED BY LOW HARMONISATION IN FUNDS REGULATION
- RESISTANCE TOWARDS CO-DESIGN APPROACH (Despite important co-design work, selection through calls for proposals dominated)
- EAFRD : CRUCIAL ROLE OF COOPERATION (MEASURE 16)
- RELEVANT SHARE OF FEASR IN TOTAL FUNDS (17%) WAS DRIVEN BY LOCAL ACTORS DEMAND
- A NEW ATTENTION OF ORDINARY POLICIES (EDUCATION, HEALTH & TRANSPORTATION)
- A CONSISTENT CULTURAL ACTION
- **EVALUATION LABORATOIRES TO LEARN FROM THE PREVIOUS PROGRAMMING PERIOD**



Rural Pact Conference
15-16 June 2022

Sabrina Lucatelli – Cohesion Policy Department –
Presidency of Italy's Council of Ministers



A new Idea of Administration



**Instead of Boring Big Front Meetings, going to Territories! Co
–projecting with people.....**

Thank you





Oltrepò Pavese Area: A working group in action to define mobility outcomes

Methodology to identify Inner Areas

'Service Centres' have been defined as those municipalities that offer:

- an exhaustive range of secondary schools;
- at least a 1st level *DEA* (highly specialised) hospital;
- at least a 'Silver-type' railway station (*RFI*).

NO DEMOGRAPHIC CRITERIA HAVE BEEN APPLIED

Areas have been mapped according to the distance (travel time) from these 'Service Centres' as:

- 'Belt' areas – up to 20 minutes;
- 'Intermediate' areas – from 20 to 40 minutes;
- 'Remote' areas – from 40 to 75 minutes;
- 'Ultra-remote' areas – over 75 minutes.

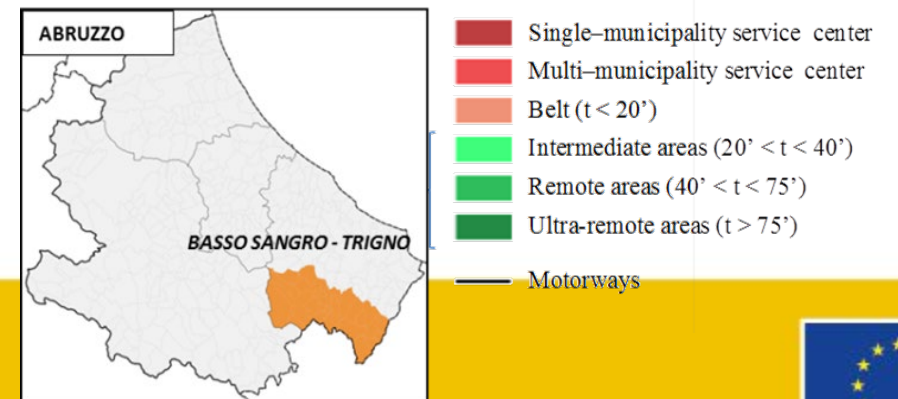
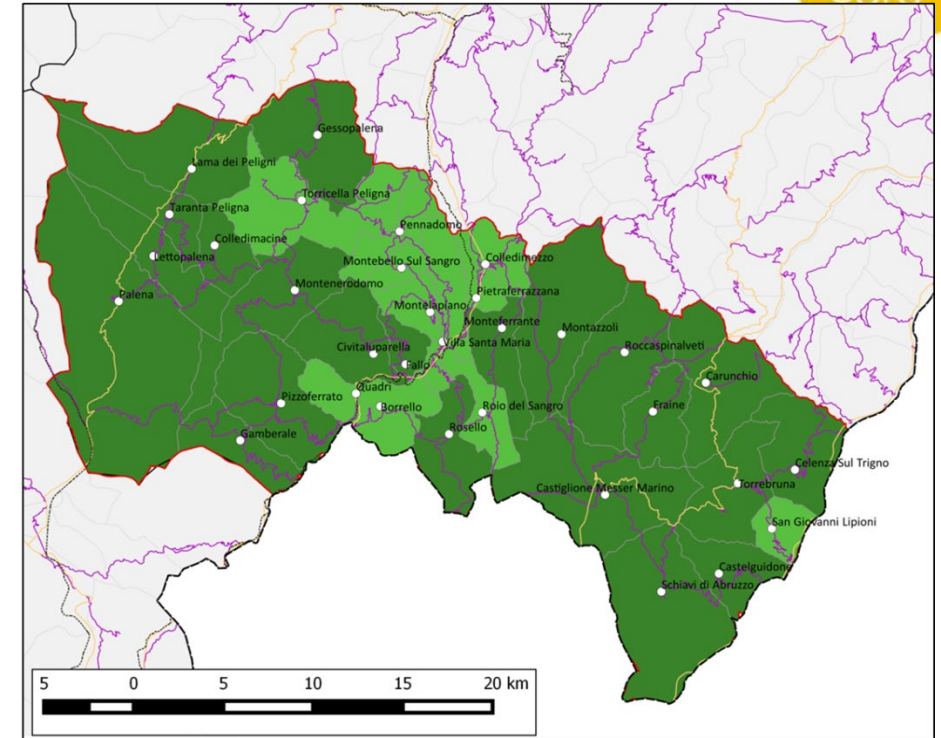
Inner Areas

Region



	Project area	Abruzzo Inner Areas	Italy
Number of municipalities	33	230	8,092
Population 2011	22,568	484,353	59,433,744
Population 2016	21,289	479,924	60,665,551
Pop. var % 2016-2011	-5.7	-0.9	2.1
Pop. var % 2011-2001	-13.7	-0.5	4.3
Pop. var % 2011-1971	-43.8	-4.0	9.8

Expected outcomes	Actions
Improvement of students' skills, security and usability of school institutes, territorial school activities, and improvement of didactics.	Creation of a single poly-functional centralised school institute in Celenza sul Trigno
Enhancement of infrastructure network and of provision of territorial healthcare and social services.	Community Hospital New emergency service locations Fragility nurse
Enhancement of the transport system for the elderly, students and workers.	Social-aim transport



Rural Pact Conference
15-16 June 2022



How do we monitor results?

– an example –



Result Indicators to measure healthcare improvements:

Actions:

Reduce the time (in minutes) between the start of the emergency telephone call made and first aid vehicle's arrival at the site



Increase transport organisation and efficiency that influence inhabitants' access to healthcare services

Percentage increase in population aged 65 and over treated via Integrated Home Care (ADI) services



Promote social inclusion, fight against poverty and all forms of discrimination

Increase specialist outpatient services provided per 1,000 residents



Increase/Enhancement of care services and healthcare and social service infrastructure.



	BASSO SANGRO-TRIGNO
Number of municipalities	33
Population 2016	21,289
Pop. var % 2016-2011	-5.7
Pop. var % 2011-2001	-13.7



Rural Pact Conference
15-16 June 2022

Sabrina Lucatelli – Cohesion Policy Department –
Presidency of Italy's Council of Ministers

