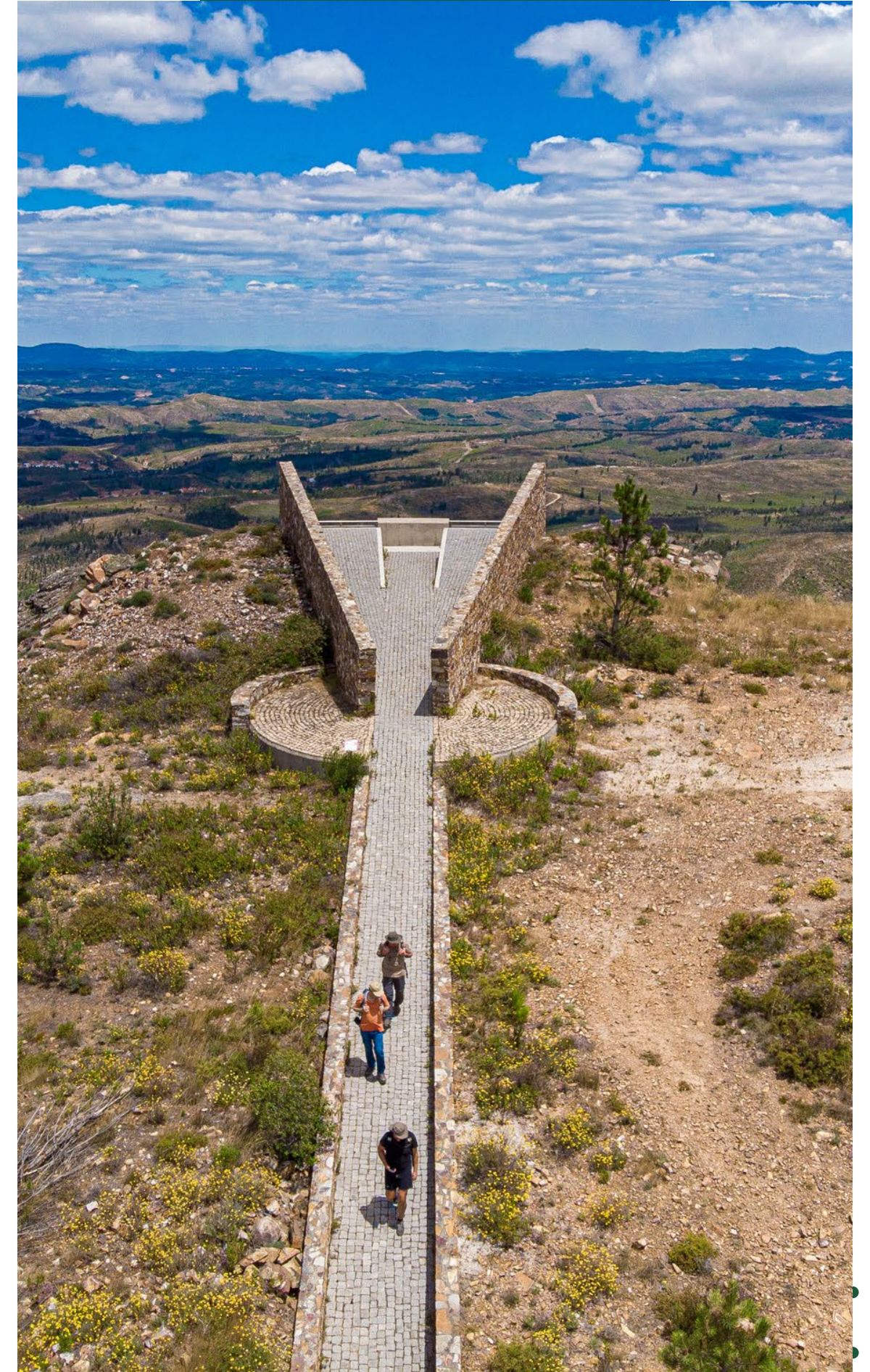




ATTRACTING PEOPLE BUILDING COMMUNITIES

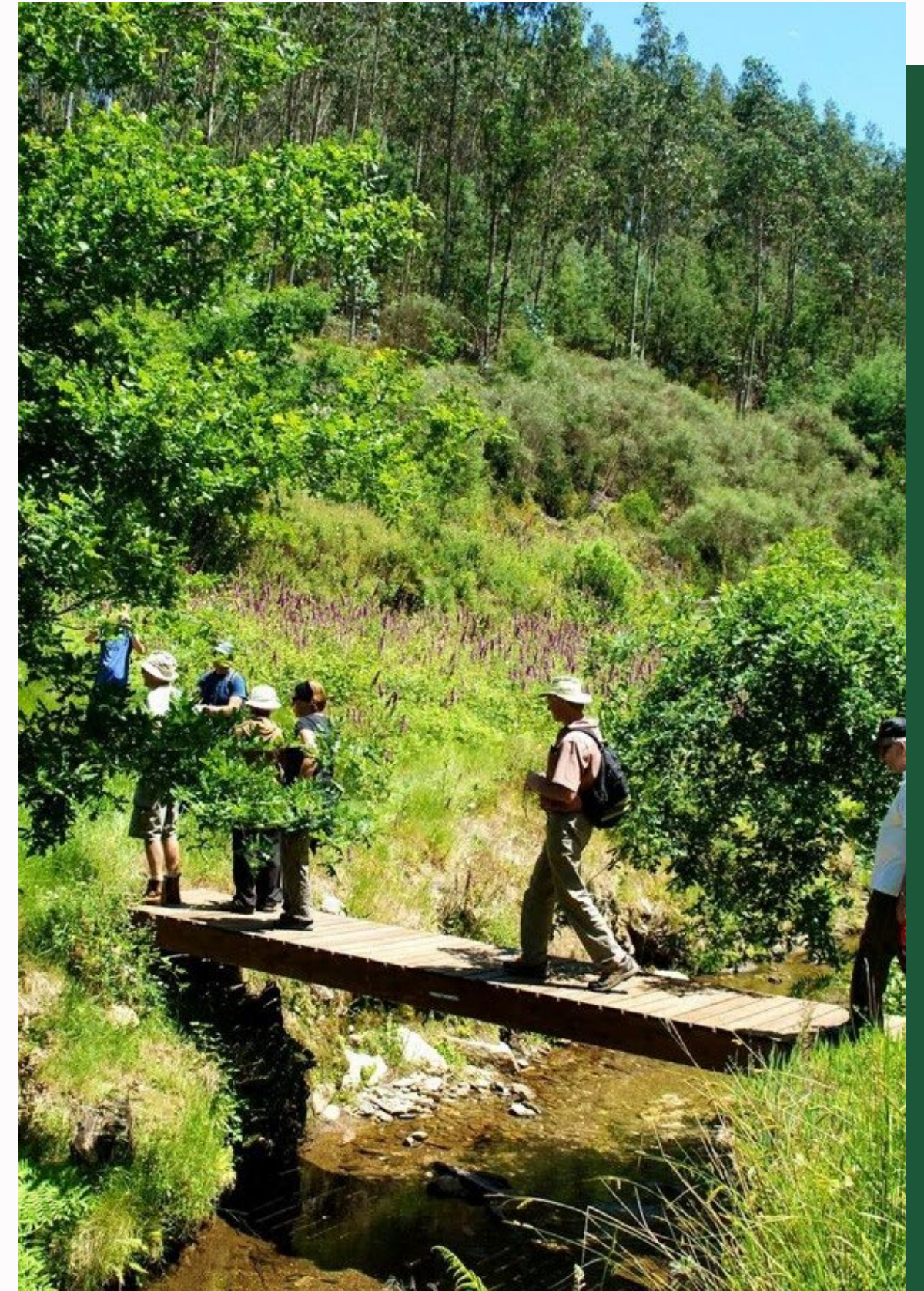
INSIGHTS FROM THE PORTUGUESE FIGHT AGAINST DEPOPULATION

João Almeida

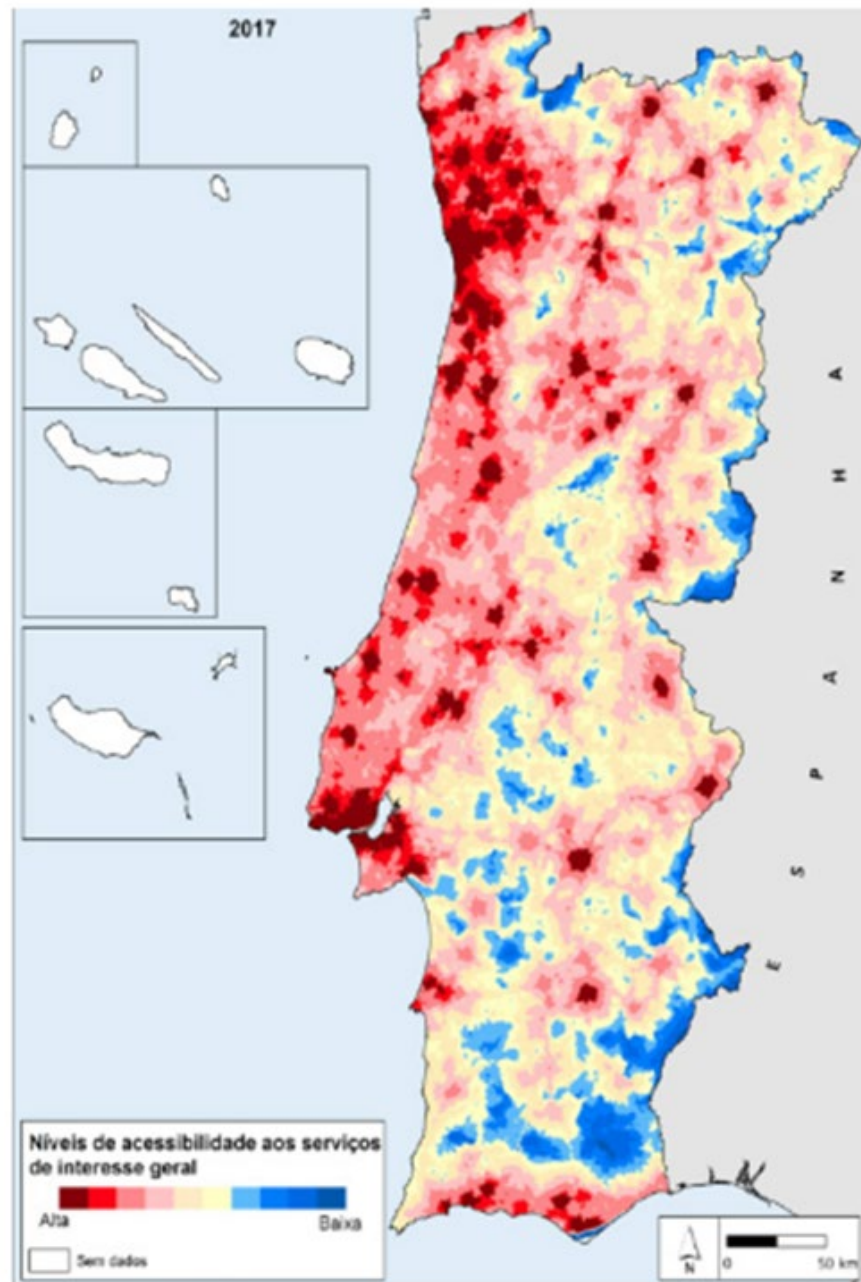


Content

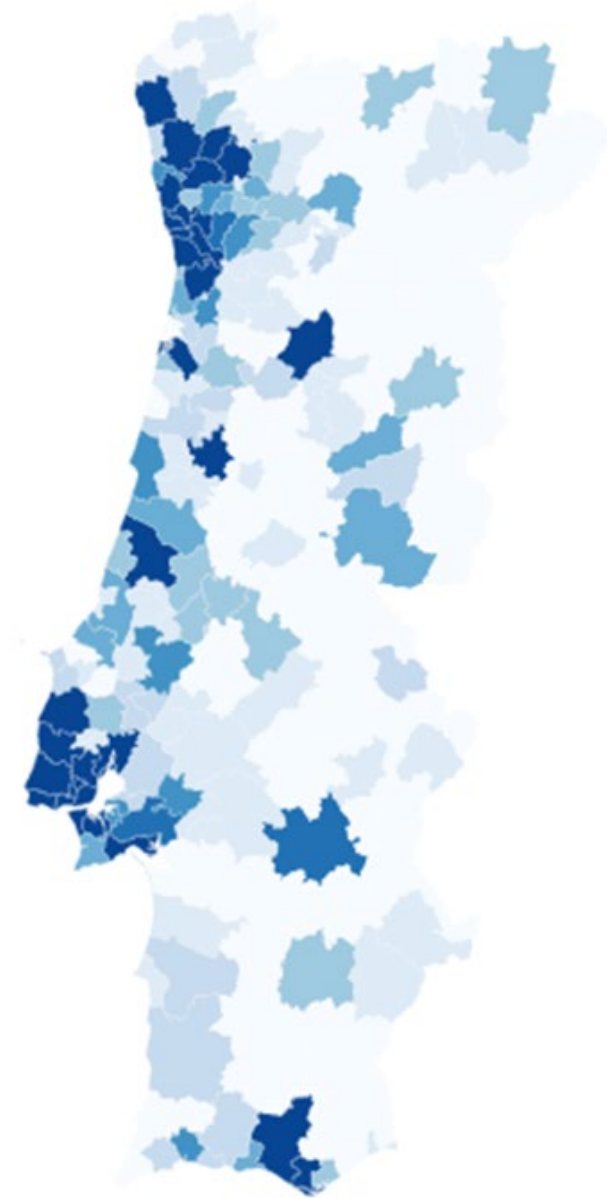
- 02 The Portuguese Context
- 03 Rural Move
- 09 Insights from Portugal
- 13 Best Practices
- 14 Concluding Remarks



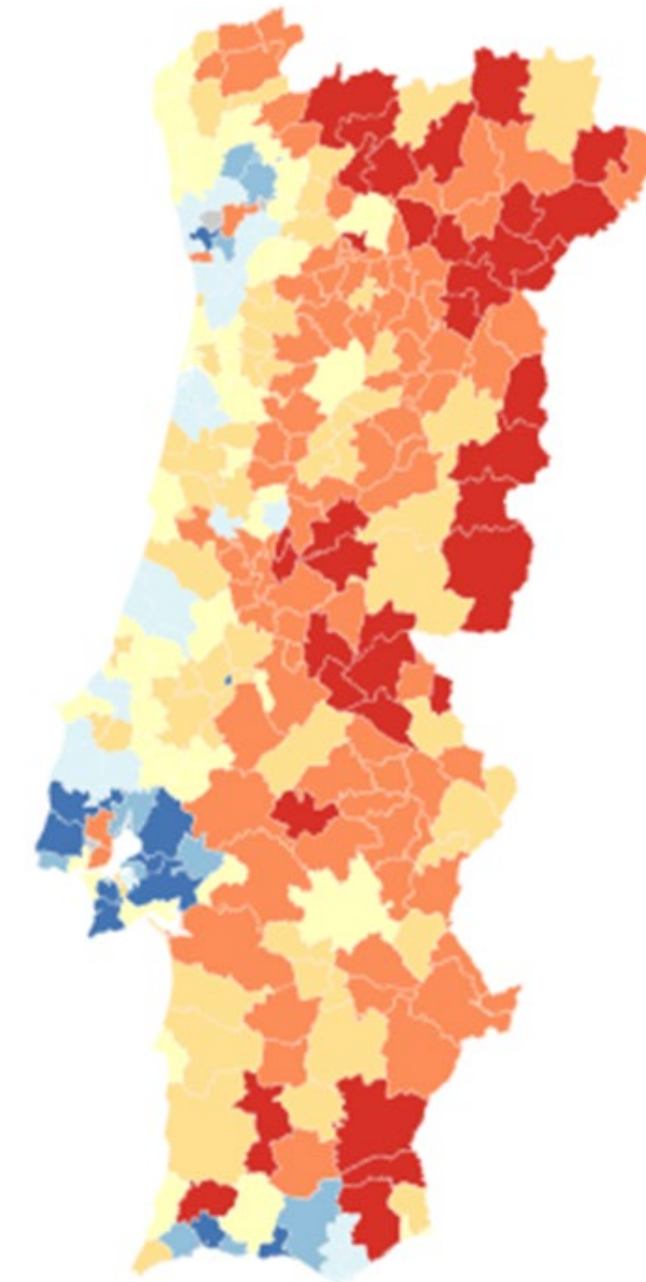
The Portuguese Context



Accessibility to Services
of General Interest

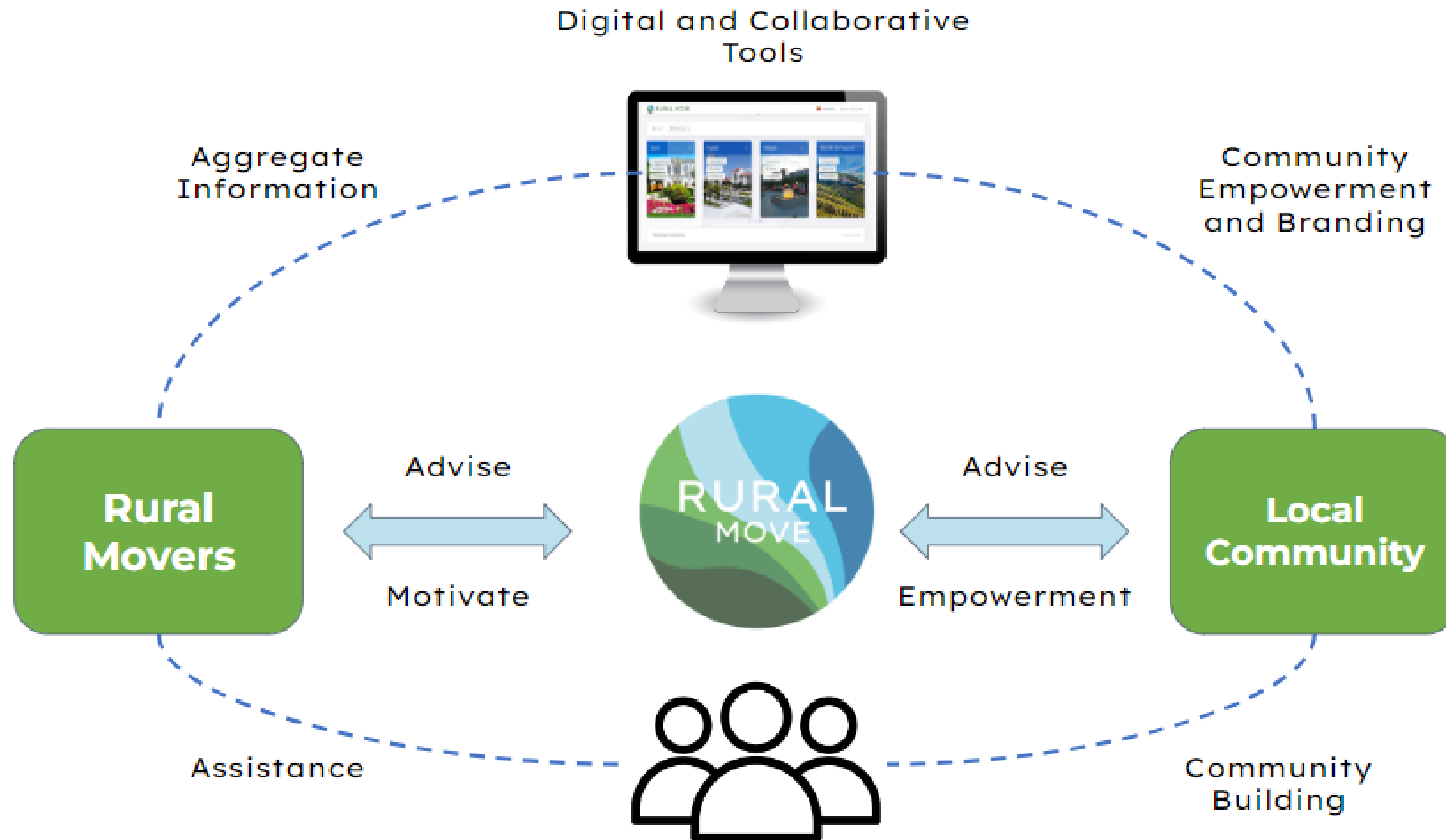


Purchasing Power
per capita



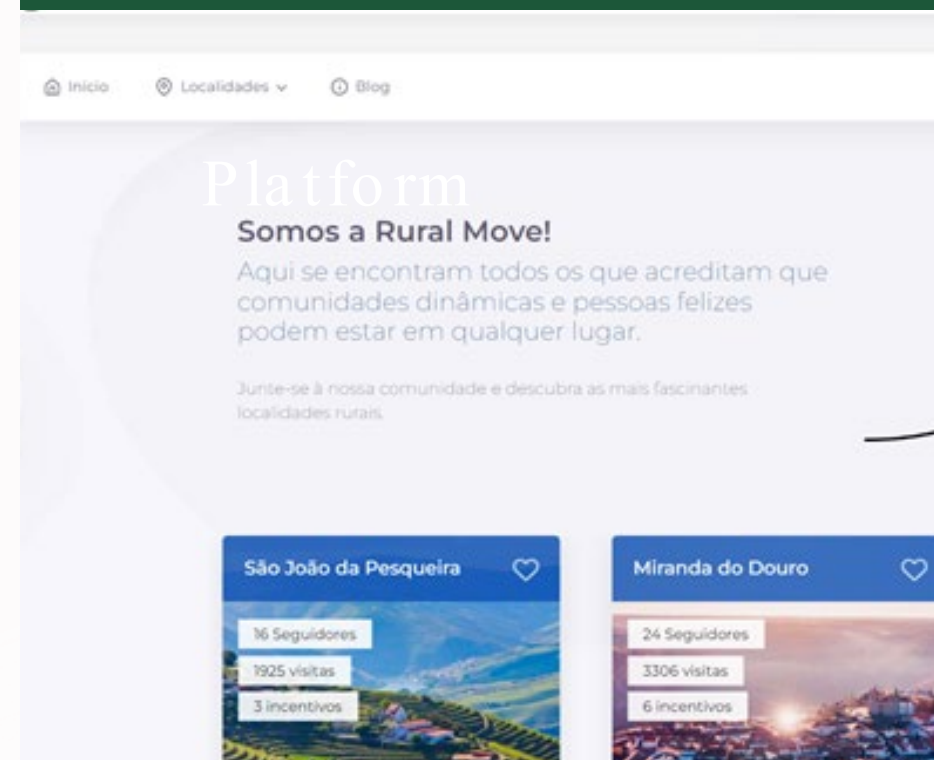
Population Variation

Rural Move Framework



Our Initiatives

Platform



Information about housing, employment, benefits, etc.

Support to Movers



Peer to Peer Support
Contact Point

Matching Events



2 Online Matching Events
5 on-site meetups

Our Initiatives

Capacity Building



Workshops (online and on-site)
Resource Bank

Research



+15 Interviews with
Movers
Focus Group with Local
Communities

Advocacy

**João Almeida (Rural Move):
“Responsabilidade social também é
contribuir para a coesão territorial”**

Criada para encorajar o regresso aos territórios de baixa densidade, a Rural Move, liderada por João Almeida, está presente em 30 municípios. Recentemente, a iniciativa foi distinguida como projeto inovador pelo Centro de Estudos Ibéricos.

Segunda-feira, 31 Outubro 2022 | Sofia Craveiro



Opinion Papers
Participation/Organization
Events

Our Impact

+30

Rural Territories

from North to South of Portugal

+250

Support to Movers

direct and indirect support to people that want to live, work or invest in rural areas.

+50

Media Articles

from local to international media

+75

Volunteers & Partners

over 30 active volunteers and 30 local and national partners.

+250k

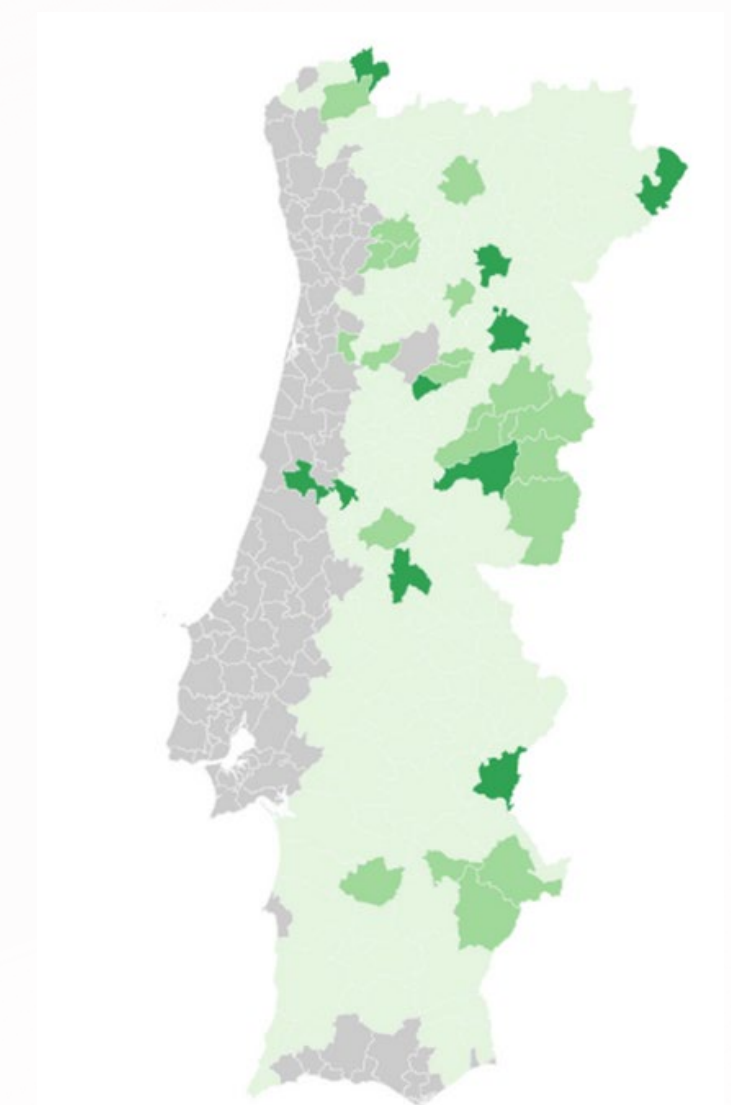
Social Media Reach

over the last year on the main social media platforms.

+40k

€€ Raised

from social innovation funds and projects.





INSIGHTS FROM PORTUGAL

Public Policies
Rural Communities
Rural "Movers"

Public Policies

Main Insights

- Increasing interest and awareness
- Hard -infrastructure (ex. national network of coworking spaces)
- Subsidies and incentives (incentives to relocation; tax benefits;
- Formal support (ex. local support offices)

Main Challenges

- bureaucracy and complexity;
- engaging the local actors;
- copy urban-models;
- short-term vision;
- do not provide informal support.

Best Practice



+CO3SO Emprego Interior
Employment Incentives for
companies located in rural
areas

Rural Communities

Main Insights

- are aware of the depopulation issue;
- ask for more incentives for people to come;
- but ... high -resistance to newcomers.

Main Challenges

- lack of competences;
- short-term vision;
- high-resistance to newcomers;
- involvement in local strategies.

Best Practice



Identification and Training of
Community Managers / Local
Leaders.

Rural Movers

Main Insights

- increasing interest in living in rural areas;
- want to get involved in local dynamics;
- start their own initiatives due to the lack of local initiatives.
- play the role of community -managers.

Main Challenges

- social integration;
- informal support from the local authorities;
- lack of legitimacy.

Best Practice



ENABLING FACTORS

policies for rural revitalisation
in Portugal



Public Incentives & Funding

a wide range of funding mechanisms, incentives and subsidies to relocate companies and workers to rural areas



Partnerships for Innovation

strong social innovation sector and policies targeted to innovation in rural areas



Knowledge Exchange

involvement of local and regional actors in smart villages, living labs, fab labs networks

WHAT WE NEED TO DO NEXT?

Main improvement needed in policies for rural revitalisation in Portugal:

+ Integrated Strategies

implement rural proofing; build positive rural narratives, and improve cross-sector strategies

+ Territorial Cooperation

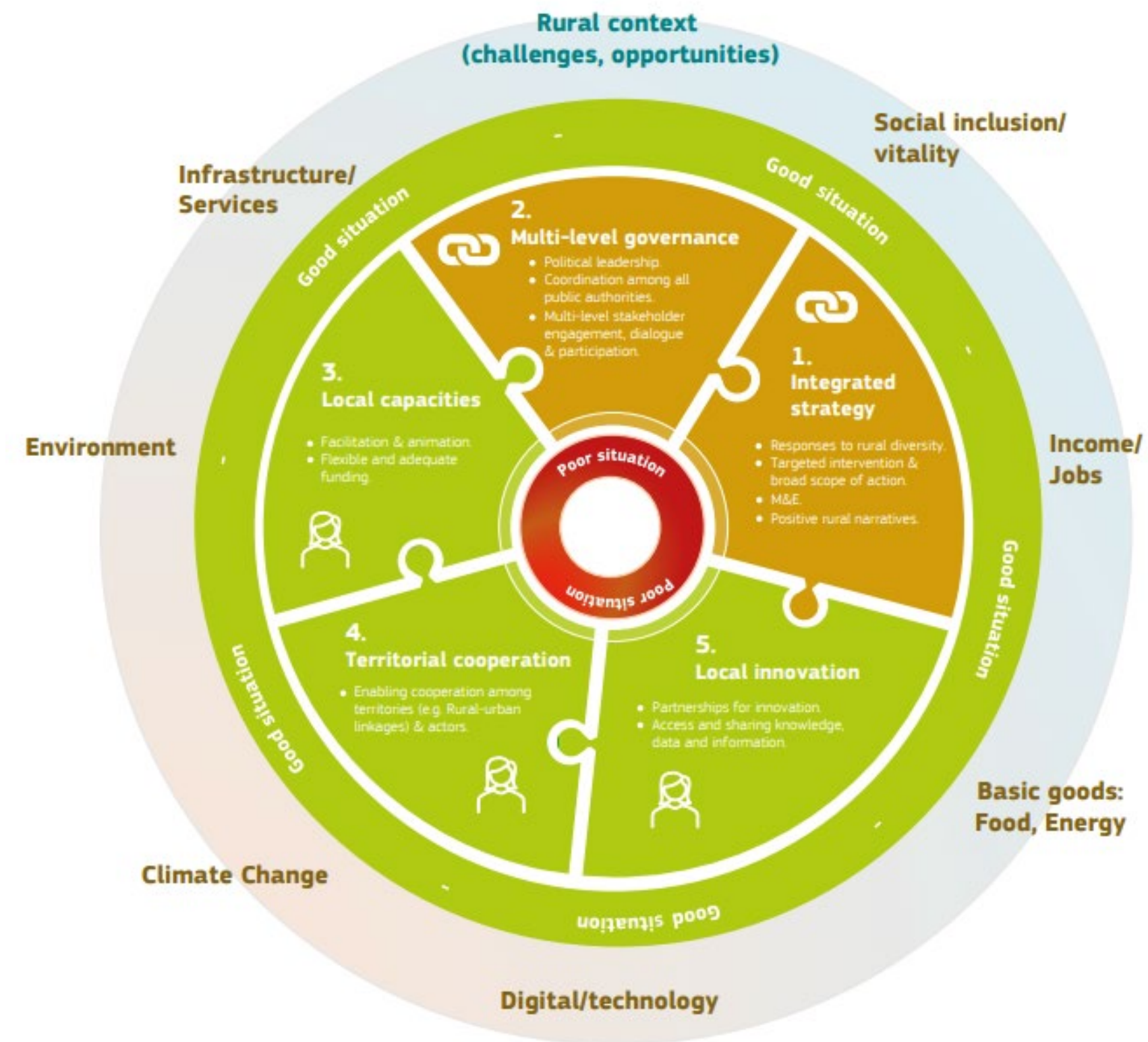
promote rural-urban linkages and regional cooperation

+ Multi-level dialogue

involvement of different stakeholders and different fields in the dialogue

+ Capacity-Building


empowerment of rural communities to take action




Enabling Factors for Rural Revitalisation (ENRD, 2022)



João Almeida

 joao.almeida@ruralmove.org

 [linkedin.com/in/joaoalmeidarc](https://www.linkedin.com/in/joaoalmeidarc)

 +351 965 127667

