

Rural Pact Conference

15-16 June 2022



Mapping functional rural areas in Romania - ensuring food security & sustainable development in a changing world

Alexandru Rusu, Octavian Groza, Lilian Niacșu, Andrei Enea

Faculty of Geography and Geology, Alexandru Ioan Cuza University of Iasi,
Romania



Rural Pact Conference

15-16 June 2022



Content

1. General background

- Geographical environment of Romania (general landforms, soil cover pattern, land use / land cover, productive potential of agricultural land, limiting factors of the productive potential of agricultural land)
- Agriculture in Romania (land management, crop structure, agricultural production)

2. Mapping functional rural areas in Romania

3. Future challenges dealing with the agriculture - food security & sustainable development in a changing world

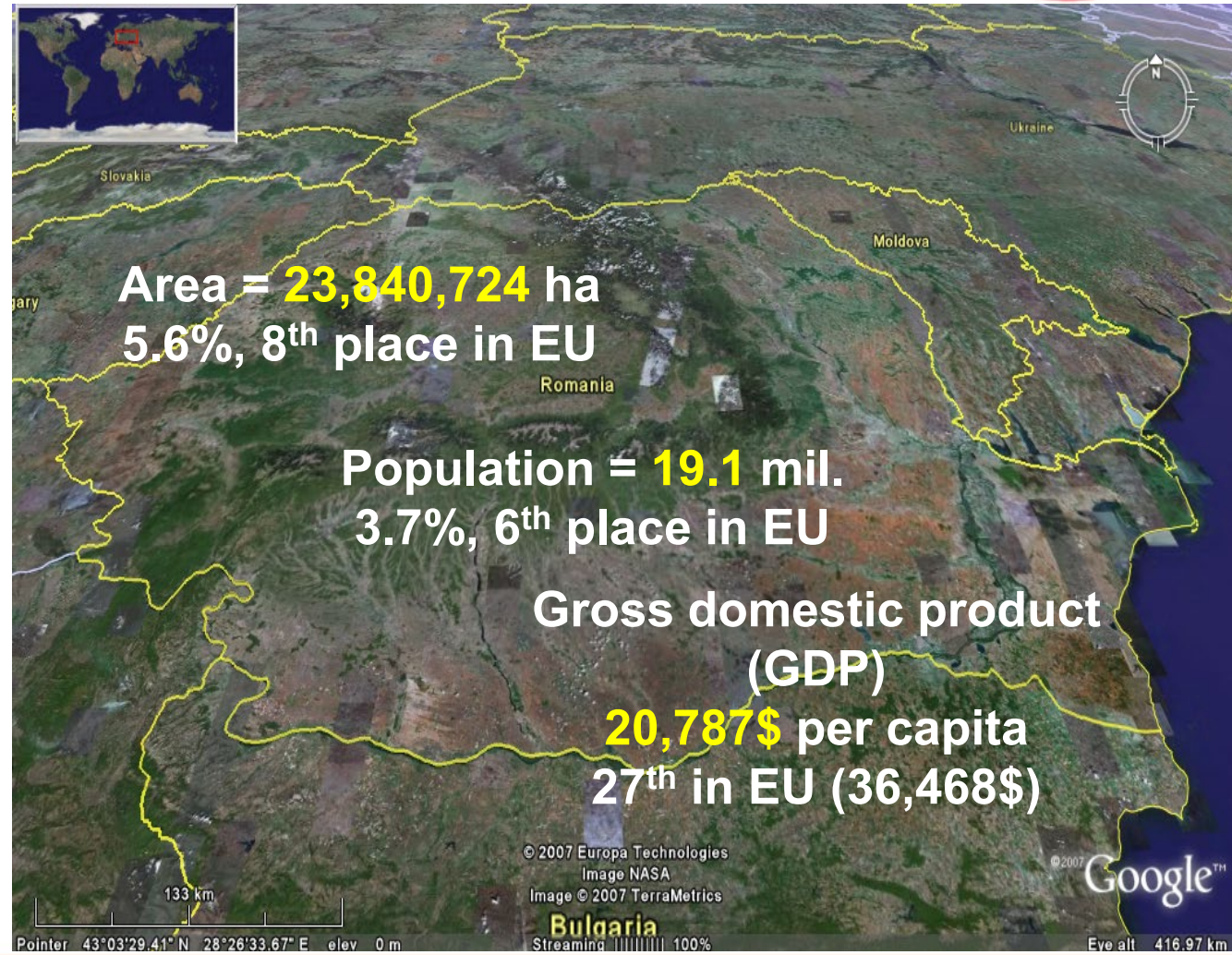
1. General background

Geographical environment of Romania



Land use / land cover	Area (x10 ⁶ ha)	%
Agricultural land	14.8	62,1%
Arable	9.3	39.2
Pasture	3.4	14.3
Meadows	1.5	6.3
Vineyards	0.3	1.2
Orchards	0.3	1.1
Non-agricultural land	7.7	32.4
"Urban" land	1.3	5.5
Total Romania	23.839	100.0

National Agency for Cadaster and Land Registration (NACLR)



Rural Pact Conference
15-16 June 2022





Natural and anthropic limiting factors of the productive potential of agricultural land in Romania

(www.madr.ro)

Limiting factor	x1000 ha	%
Drought	7100	47
Periodic excess moisture	3781	25
Soil erosion by water	6300	42
Soil erosion by wind	378	3
Landslides	702	5
Soil salinization	391	
Soil alkalization	223	
Excessive soil skeleton	300	
Primary soil compaction	2060	
Compaction by improper work	6500	
Crust formation	2300	
Low / extremely low humus reserve in the soil	7485	
High and moderate soil acidity	3424	
Poor and very poor supply of mobile phosphorus	6330	
Poor and very poor supply of mobile potassium	787	
Poor nitrogen supply	5110	
Deficiencies of microelements	1500	
Soil chemical pollution	900	

Agriculture in Romania

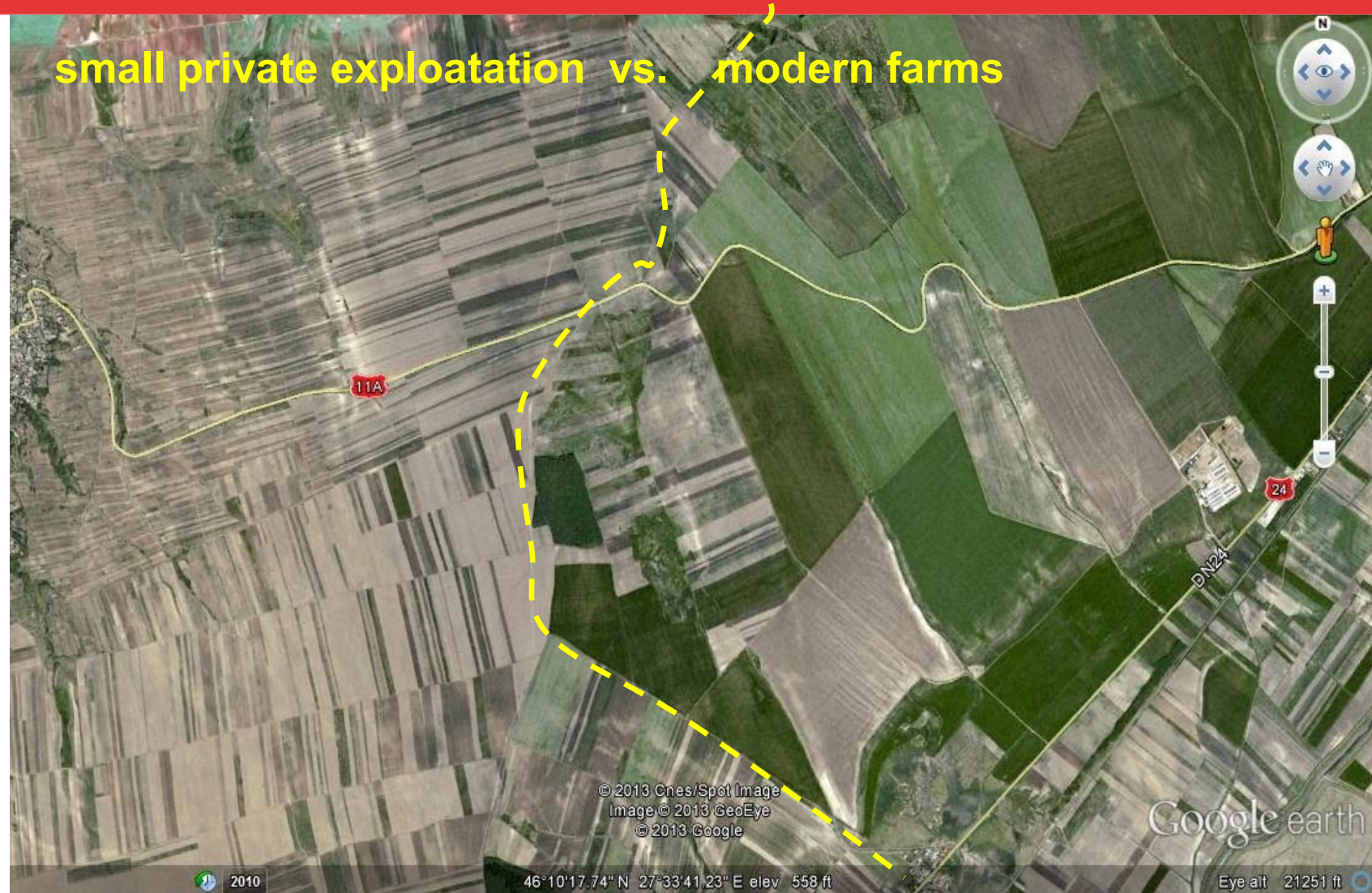
Agricultural land:

- 4.48 million individual exploitations (NIS, 2012)

Arable land:

2012 - 3.97 million
2010 – 3.80 million
2016 – 3.42 million individual smallholdings
(Anghelache, 2018)

Average area per exploitation – **2.24 ha**



The existence of a **very large number of small exploitations** in parallel with the very large ones reveals the **structural imbalance** that influences Romanian agriculture



Crop structure & agricultural production in Romania in 2020 (EUROSTAT, 2021)

	Cultivated areas (x1000ha)	Production (x1000t)
Cereals (winter wheat, barley, oat, corn)	5,435	18,968 (30,412*)
Leguminous plants for grains (peas, beans)	107	122
Oilseeds plants (sunflower, soy beans, rapeseed)	1,736	3,111
Potatoes	166	2,683
Vegetables	225	3,517
Vineyards	177	938
Orchards	138	837

*2019

Cereal production in Romania (1995-2021 - MARD, 1995-2021)

Year	Winter wheat			Barley			Corn		
	Cultivated areas (x1000ha)	Production (x1000t)	Avg. production (kg/ha)	Cultivated areas (x1000ha)	Production (x1000t)	Avg. production (kg/ha)	Cultivated areas (x1000ha)	Production (x1000t)	Avg. production (kg/ha)
1995	2,480.8	7,666	3,090	581.7	1,816.1	3,122	3,109.2	9,899.7	3,184
2000	1,937.9	4,438	2,290	411.9	867.0	2,105	3,049.4	4,888.2	1,603
2007	1,987.1	3,065	1,542	363.8	531.4	1,461	2,524.7	3,854.0	1,527
2014	2,123.1	7,609	3,584	516.0	1,712.4	3,319	2,512.8	11,988.6	4,771
2020	2,146.0	6,410	2,987	438.0	1,121.0	2,559	2,639.0	10,844.0	4,109
Avg.	2,135.0	5,838	2,734	494.0	1,209.6	2,449	3,086.6	8,294.9	2,687

2. Mapping functional rural areas in Romania

Background and problem setting:

- ... the Romanian rural areas – a cumulative frame of territorial disadvantages, but not only
- ... the double status of the functional rural areas – policy intervention and **bassin de vie**
- ... a limited amount of indicators to be engaged for the delineation of the functional rural areas (FRA) on national and ESPON space.

Main findings:

- ... providing two complementary definitions of the Romanian functional rural areas (FRA) , one based on **the economic dimension**, the second focusing on the **territorial functionality**.
- ... delivering refined versions of definitions, delineations and projections of FRA
- ... elaboration of policy recommendations.



ESPON EGTC
Inspire Policy Making with Territorial Evidence
SO4 on-demand activity
“Functional rural areas for Romania”

The UAIC team:
Alexandru Rusu
Octavian Groza
Lilian Niacșu
Andrei Enea
Isabela Botez



Rural Pact Conference
15-16 June 2022





The economic dimension of the FRA in Romania

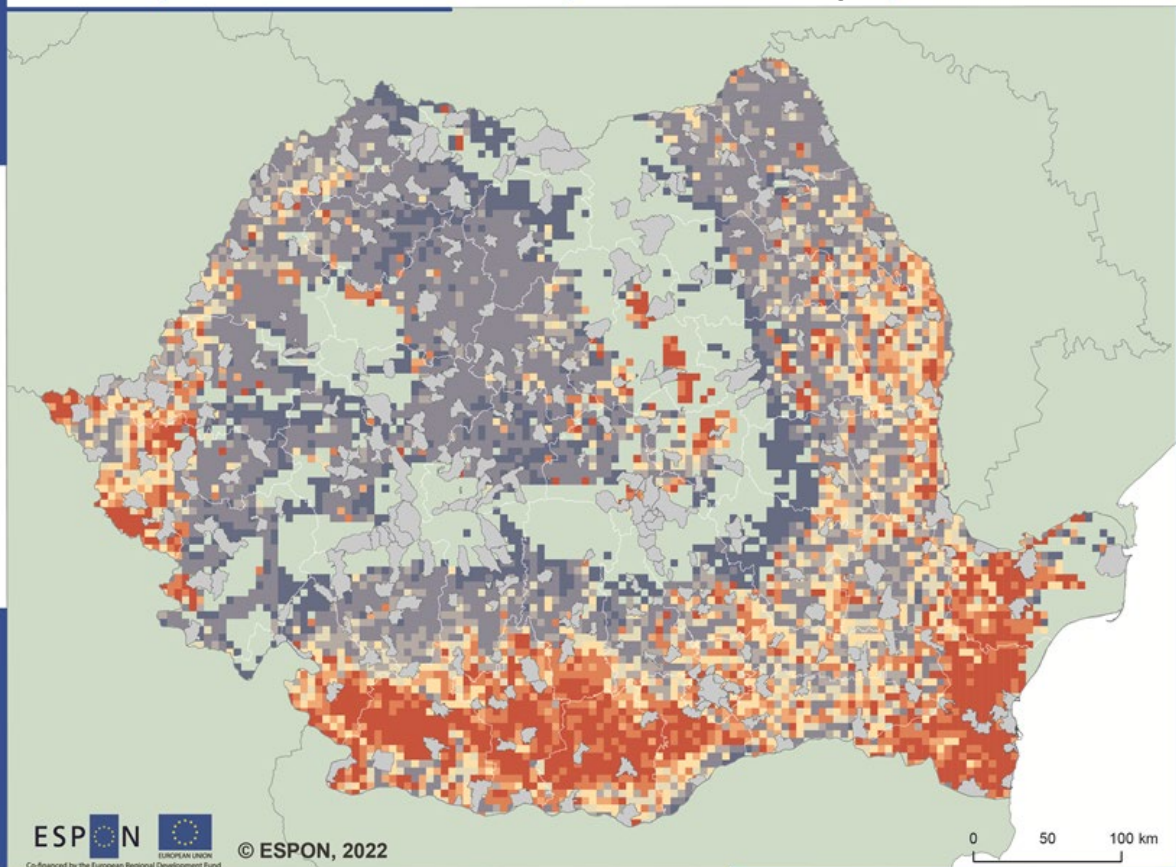
1. Stock of companies active in Romania, at LAU level. Time series for 1992-2021.
2. Agricultural specialization at local level (main cultivation patterns). Parcel size, data available only for 2021.
3. Services of general interest in the Romanian rural areas
4. EU funding and absorption capacity, at local level.

Territorial functionality

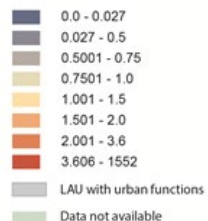
1. Accessibility indicators and spatial interactions, at local level.
2. Typologies of the agricultural specialization.
3. Demographic densities and trends.
4. First set of FRA delineations (V1)
5. Second set of FRA delineations (V2)

The economic dimension & Territorial functionality

Local specialization: wheat crops versus corn crops in 2021

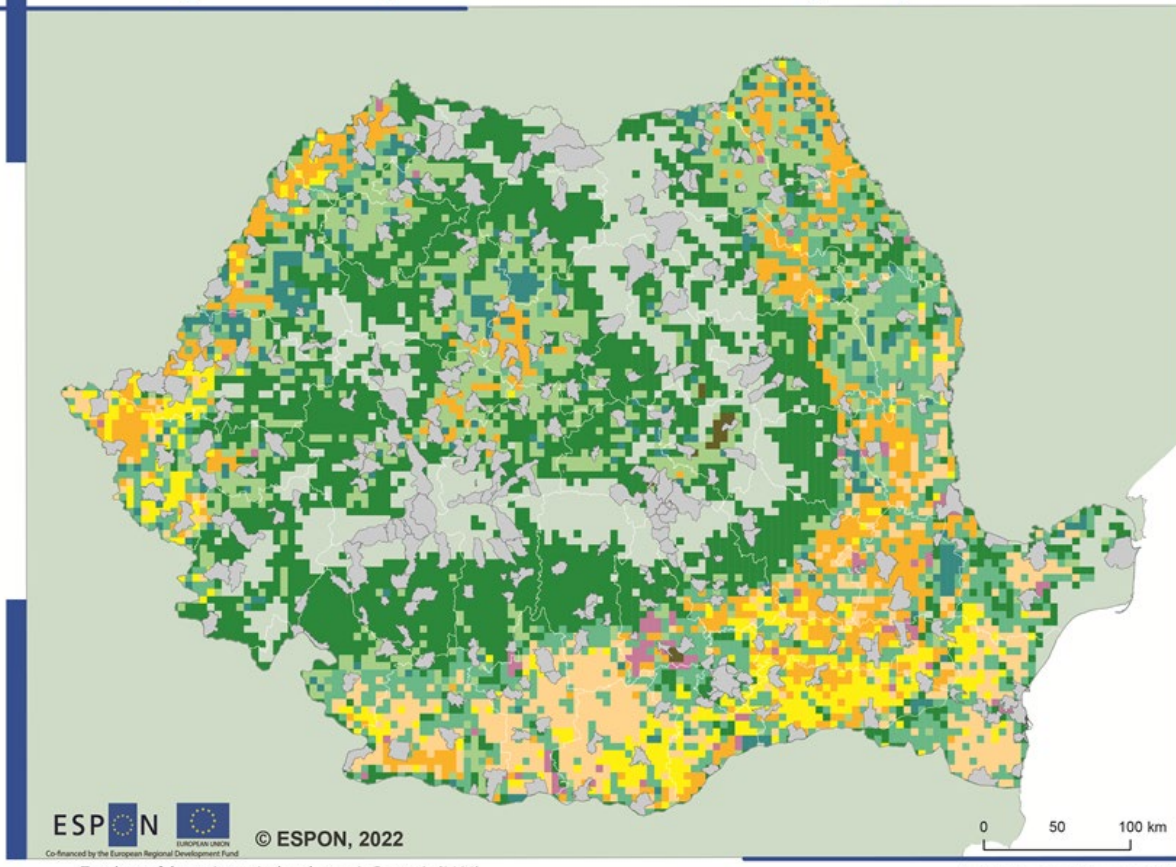


Wheat crops (ha)/ Corn crops (ha)
- ratio for each grid cell (5x5 km.)



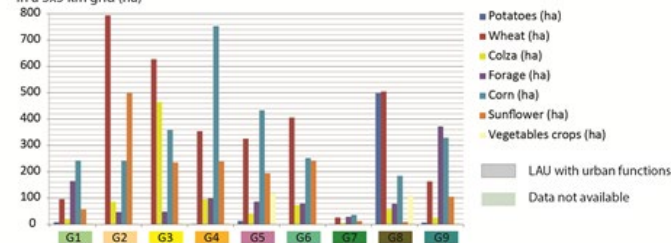
Territorial level: LAU2 (version 2018)
Source: Functional rural areas in Romania, 2022
Origin of data: MDRLP (2022), Eurogeographics
© University of Geneva for administrative boundaries

Local agricultural specialization in Romania (2021)



Typology of the major agricultural crops in Romania (2021)

Average surface
in a 5x5 km grid (ha)

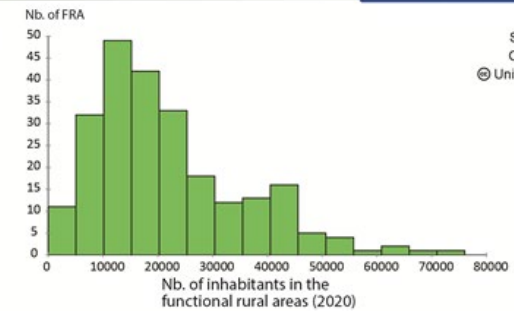
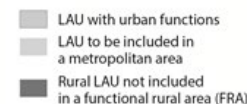
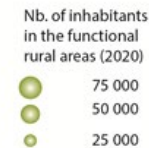
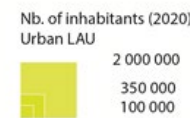
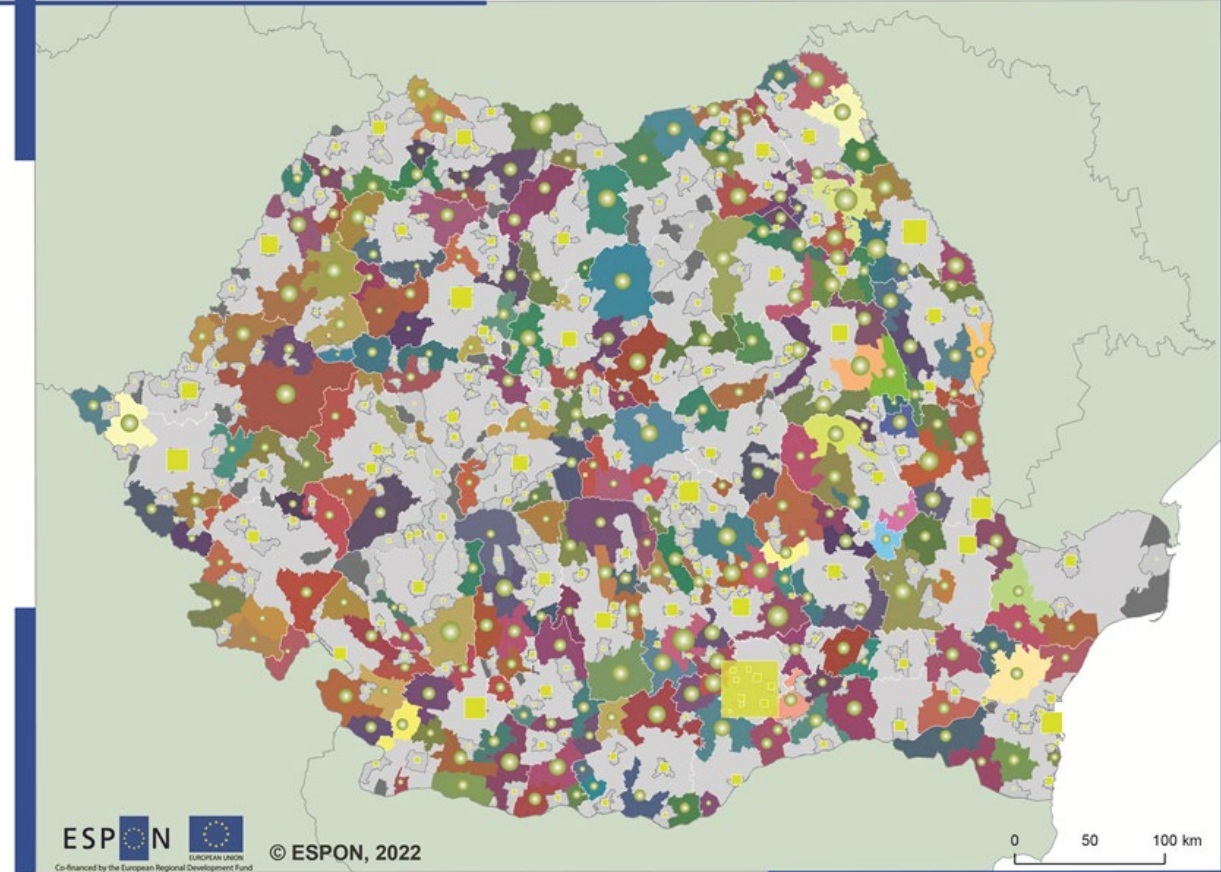


Territorial level: LAU2 (version 2018)
Source: Functional rural areas in Romania, 2022
Origin of data: MDRLP (2022), Eurogeographics
© University of Geneva for administrative boundaries

Key findings:

1. Ignoring the LAU to be included in potential metropolitan areas, the set of indicators retained for the delineation provided a first version of the FRA
2. List of indicators:
 - mean altitude
 - distance to the NUTS3 administrative centers
 - demographic density (2020)
 - demographic evolution (2011-2020)
 - PNDL absorption during the project's lifetime
3. Constraints: contiguity, territorial imbrication, homogeneity

Delineating functional rural areas - 240 spatial units (v2)



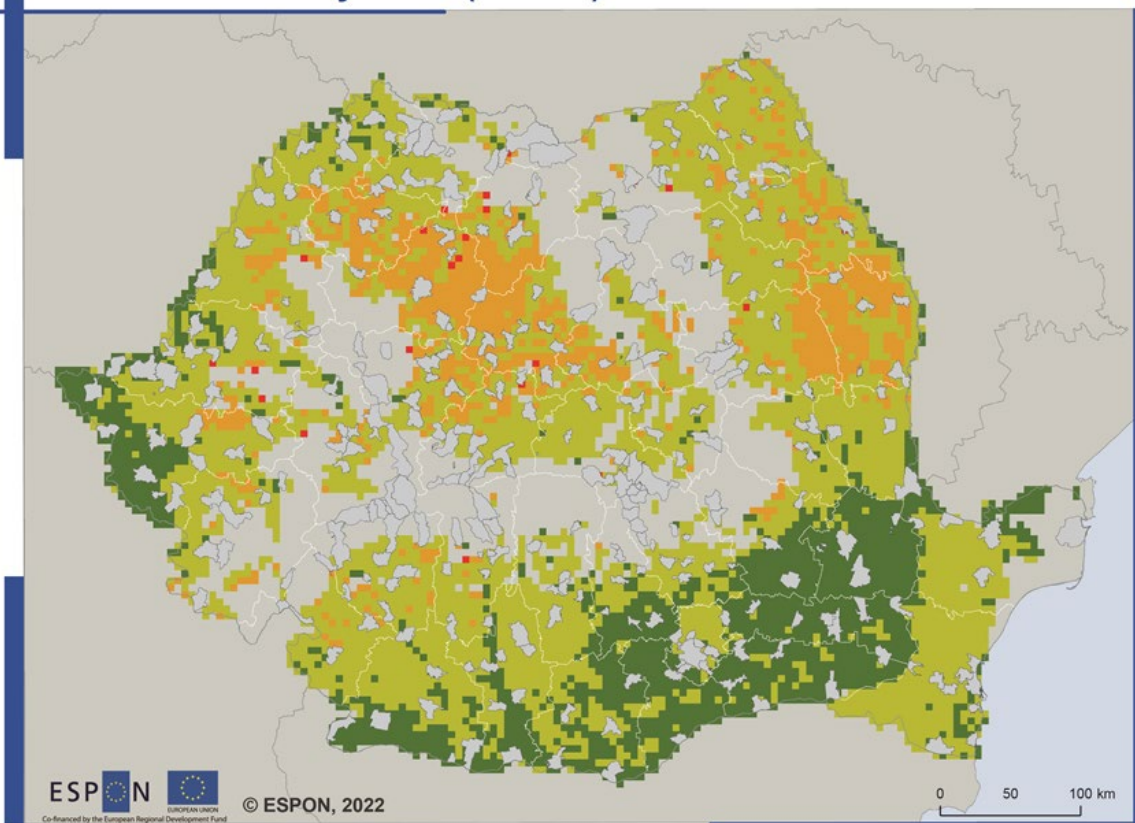
Territorial level: LAU2 (version 2018)
Source: Functional rural areas in Romania, 2022
Origin of data: MDRLP (2022), Eurogeographics
© University of Geneva for administrative boundaries

3. Future challenges

dealing with the **agriculture** in the context of the need to ensure food security & sustainable development in a changing world



Net soil erosion by water (RUSLE) in Romania



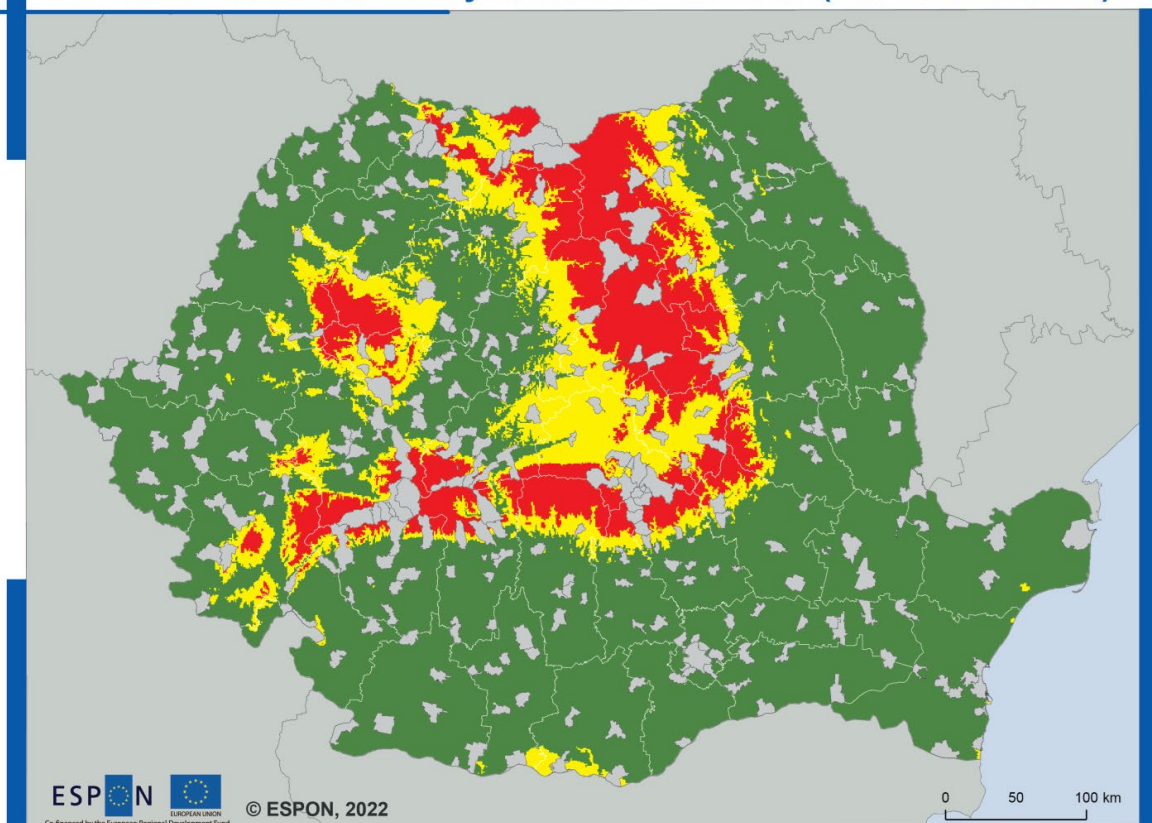
Net annual erosion

- 0-1 tons/ha/year
- 1-7 tons/ha/year
- 7-15 tons/ha/year
- > 15 tons/ha/year

Areas affected by erosion (RUSLE)			
Erosion class	Percentage	Surface (ha)	Surface (km ²)
1 (0-1 t/ha/y)	35.4	3003868	30039
2 (1-7 t/ha/y)	51.7	4385023	43850
3 (7-15 t/ha/y)	9.9	840815	8408
4 (>15 t/ha/y)	3.0	251809	2518
Total	100	8481515	84815

Territorial level: LAU2 (version 2018)
Source: Functional rural areas in Romania, 2022
Origin of data: MDRLP (2022), Eurogeographics
© University of Geneva for administrative boundaries

Wheat thermal restrictivity classes in Romania (current situation)



Legend

- Low restrictivity
- No restrictivity
- Major restrictivity

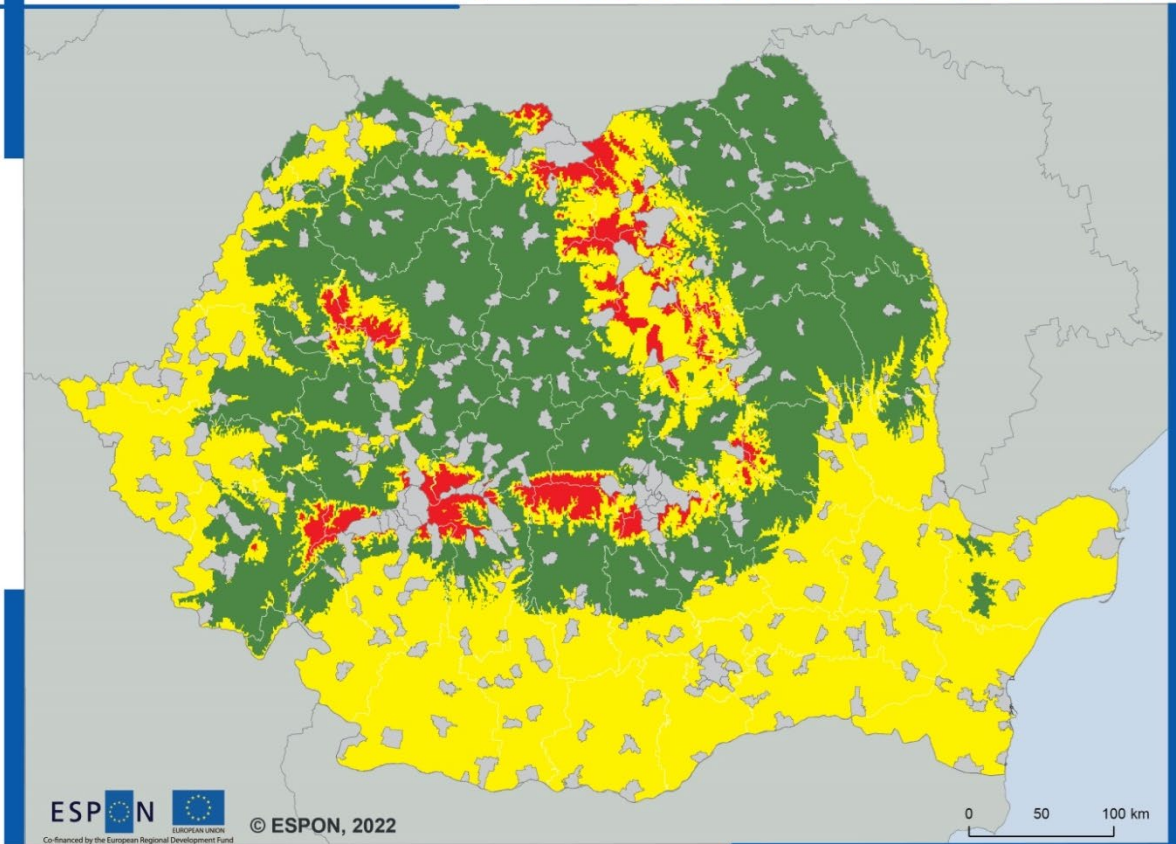
Territorial level: LAU2 (version 2018)
Source: Functional rural areas in Romania, 2022
Origin of data: MDRLP (2022), Eurogeographics
© University of Geneva for administrative boundaries

3. Future challenges

dealing with the **agriculture** in the context of the need to ensure food security & sustainable development in a changing world



Wheat thermal restrictivity classes in Romania (2021-2040 scenario)

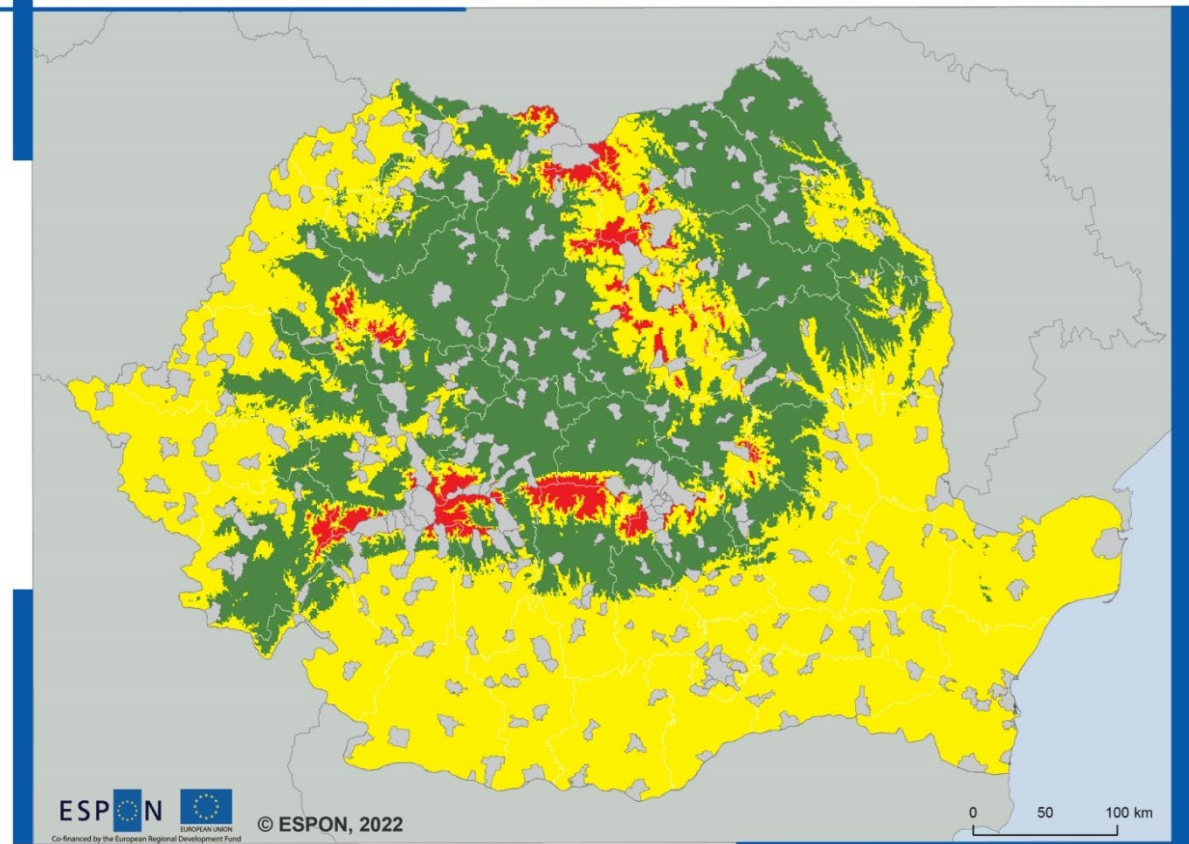


Legend

- Low restrictivity
- No restrictivity
- Major restrictivity

Territorial level: LAU2 (version 2018)
Source: Functional rural areas in Romania, 2022
Origin of data: MDRLP (2022), Eurogeographics
© University of Geneva for administrative boundaries

Wheat thermal restrictivity classes in Romania (2041-2060 scenario)



Legend

- Low restrictivity
- No restrictivity
- Major restrictivity

Territorial level: LAU2 (version 2018)
Source: Functional rural areas in Romania, 2022
Origin of data: MDRLP (2022), Eurogeographics
© University of Geneva for administrative boundaries

A scenic landscape featuring rolling hills, a small village, and distant mountains under a cloudy sky. The foreground is dominated by a field of tall, golden-brown grass. In the middle ground, a small village with several buildings is visible, nestled among green fields. The background shows a range of mountains, with a prominent, jagged peak in the distance. The sky is filled with soft, white clouds.

Thank you